



# 1 What Is The OrthoCAD iCast Digital Study Model?

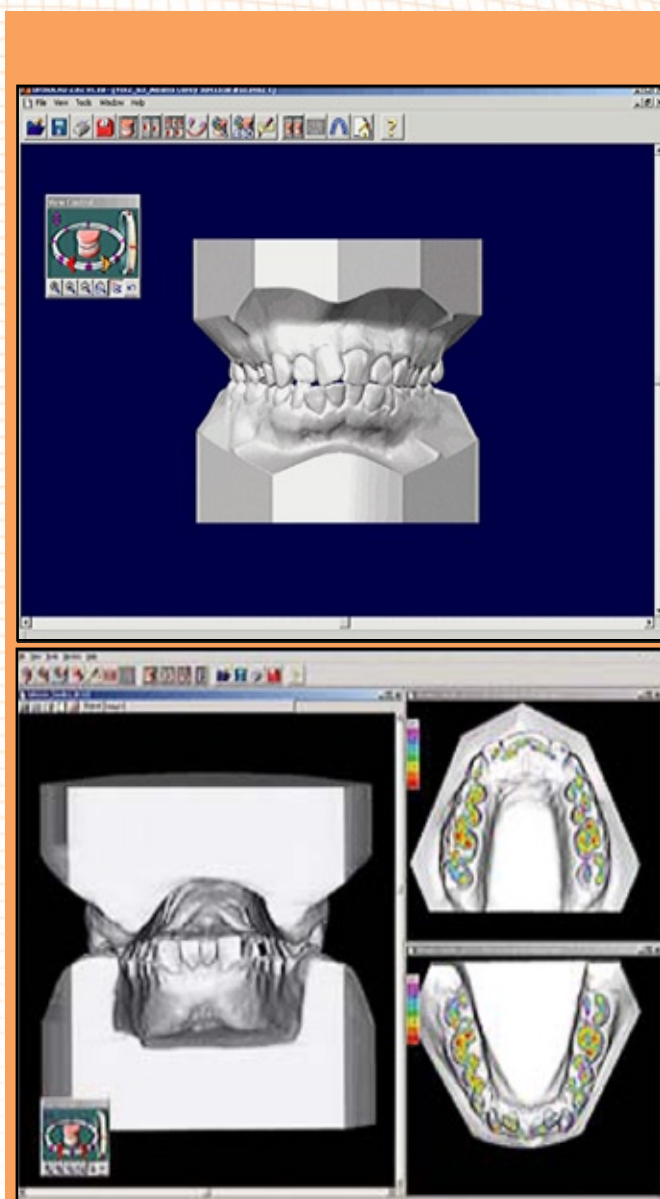
The OrthoCAD state-of-the-art process provides highly accurate digital models of patient's teeth, which the orthodontist can use to effectively diagnose and communicate cases. The highly accurate OrthoCAD iCast Digital Model is superior to a traditional stone model in every aspect.

# 2 How Does It Work?

After an impression is taken of your teeth, the OrthoCAD iCast Digital Study Model system creates a virtual 3D model of them. With the OrthoCAD iCast software suite your orthodontist can show you a simulation of your smile before, during, and after the treatment.

# 3 What Does This Mean To Me?

Your orthodontist can review your case electronically from anywhere at anytime. Not only can you review your case on screen at the doctor's office, but you can go home with a printed presentation of your virtual 3D model.



CADENT

# OrthoCAD iCast™

*creating the perfect byte.*